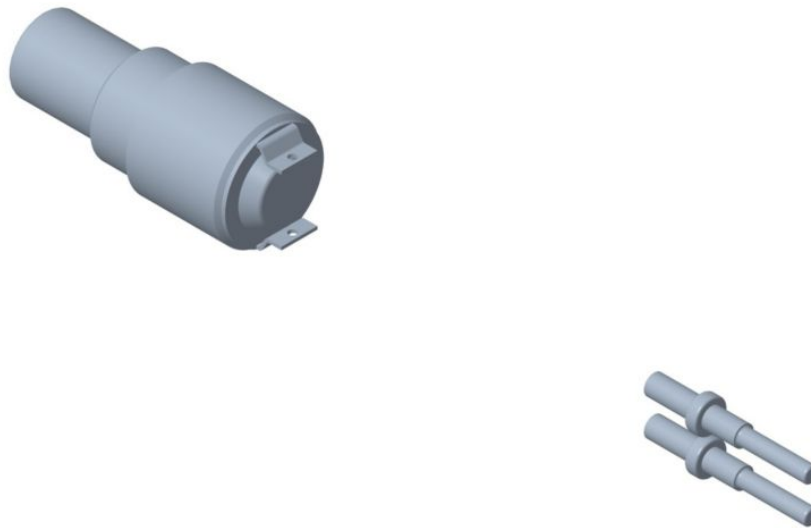


CATERPILLAR SWITCH A 8Y7237 NEW

Product Images



Beschreibung

Description:

Cat push button switches are mounted on the joystick or control panel which are simple switches to push-to-make or push-to-break the circuit for a period. Cat components make certain that your equipment is operating at an optimal level.

Attributes:

- Pushbutton switch with pigtail connector
- Momentary open, normally closed

- Voltage: 28 VDC
- Single pole single throw (SPST)
- Thread Size: 1/2-32
- Contact Size: 16
- Sealed against dust and moisture
- Rugged design for long service life
- High precision for consistent performance
- Easy and fast mounting
- Designed to work in unison with the rest of your Cat components to ensure maximum potential of your equipment

Application:

Used in operator control handles on Cat machines. Consult your owner’s manual or contact your local Cat Dealer for more information. Cat components can operate in heavy-duty applications such as severe vibration, shock, extreme operating temperature ranges, thermal cycle, thermal shock, humidity, corrosion and excessive dust.

Additional Information

Marke	CATERPILLAR	
Kondition	ORIGINAL	
Anwendungen geeignet (detailliert)	Name	Models
	BACKHOE LOADER	416C 426C 428C 436C 438C 446 446B