



[www.hamofa.com](http://www.hamofa.com)

A photograph of two men in a workshop. The man on the left, wearing a dark shirt with a 'HAMOFA' logo, holds a clipboard. The man on the right, wearing a blue jacket and glasses, is working on a mechanical component. In the foreground, there are several large, coiled metal springs. The background shows a large industrial facility with various equipment and structures.

*"Quality is our highest priority"*

## ***What does HAMOFA do?***

HAMOFA has more than 40 years of experience in the sector of diesel engines. In 1991 HAMOFA moved to its recent site in Hamont to focus on the reconditioning of large industrial diesel engines of different brands.

This specialization resulted in an extension of its warehouses and work areas with more than 8000 m<sup>2</sup> and an international customer reputation. At this moment the headquarters in Hamont (Belgium) covers more than 10.000m<sup>2</sup> of workshops, offices and warehouses and HAMOFA reconditions and sells over 900 diesel engines a year.

Since 2012 HAMOFA does not only have an international customer reputation, but it has become a global company with a new location through an acquisition in Fort-Lauderdale (USA).

HAMOFA USA has a 3000 m<sup>2</sup> workshop including warehouse. Out of this facility, we serve our North and South American customers in compliance with the European high quality and service standards.

# ***What are our specialities?***

## ***Reconditioning of diesel engines***

HAMOFA is known for its experienced mechanics and modern, high tech machinery which in the end result in a perfectly reconditioned engine. Each step, from dismantling to testing is carefully monitored.

HAMOFA reconditions mainly engines for industrial applications, such as cranes, generators and other machinery. Moreover, Hamofa also reconditions engines for bus, truck and marine applications.

The reconditioning of your old engine has numerous advantages:



### **Economical:**

The cost for reconditioning an old engine is several times lower than purchasing a new engine.



### **Ecological:**

The reconditioning process implies the re-use of major engine parts, such as block, crankshaft and cylinder head which have a positive environmental impact.



### **Warranty:**

We deliver reconditioned engines with a complete 12 months warranty, unlimited in kilometers or hours.

## ***Rebuilding your old diesel engine***

We can recondition or repair your damaged or dilapidated diesel engine.

If you can send your engine to our workshop, or if we can arrange transport, we can rebuild or repair your engine!

Advantages for having your engine repaired or rebuilt:

### **Economical:**

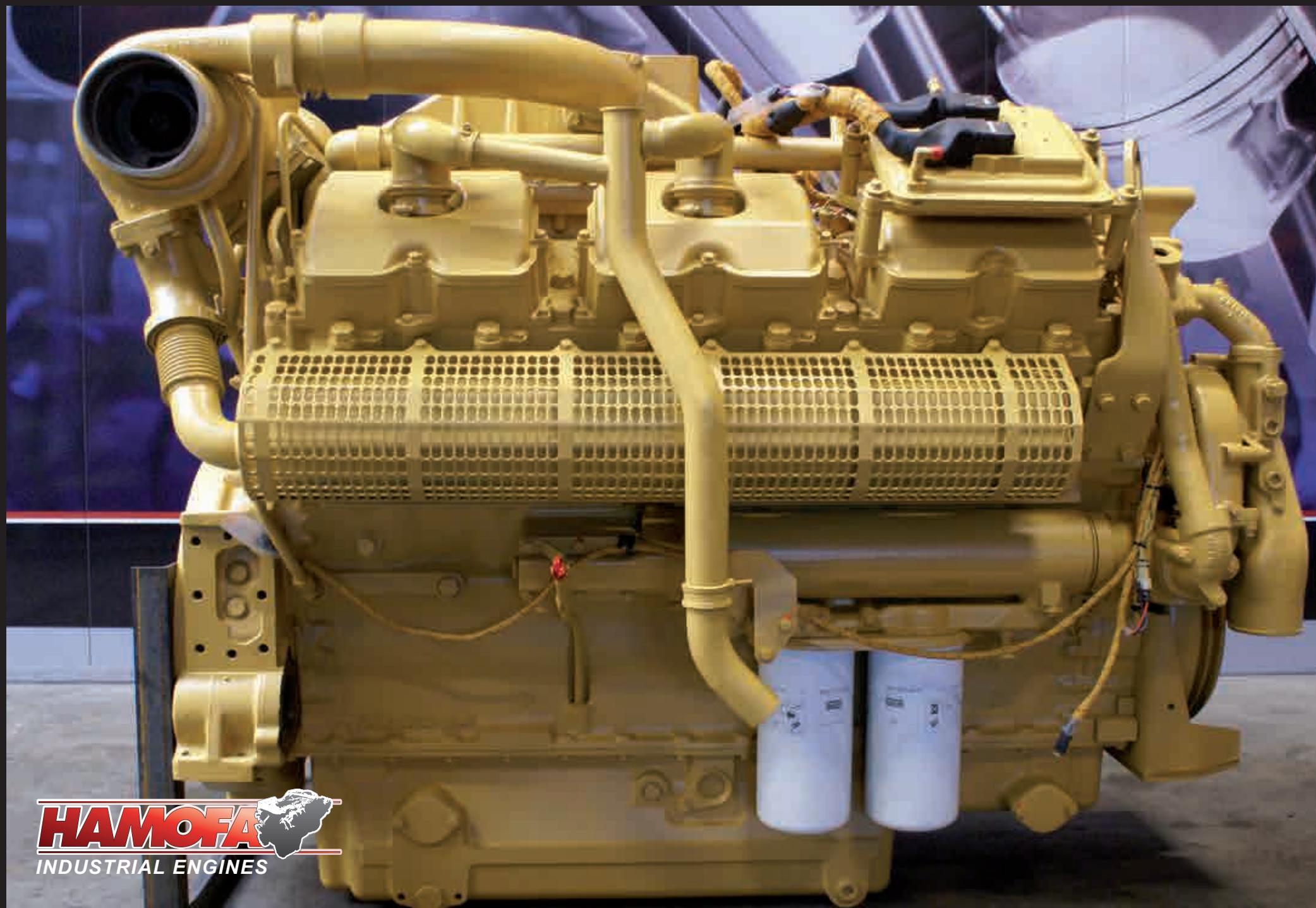
our reconditioning process implies the re-use of your major engine parts, such as block, crankshaft and cylinder head which have a positive impact on pricing.

### **Efficient:**

your original and reconditioned engine will cause no installation difficulties!







**HAMOFA**  
INDUSTRIAL ENGINES

## ***Reconditioned exchange engine***

HAMOFA possesses a large stock of exchange engines which can be delivered to its customers, after reconditioning.

You can opt for the return of your old engine, but this is not mandatory.

Should you have numerous similar engines in need of overhauling, HAMOFA is capable of preparing a reconditioned exchange engine, solely for your use at a fixed price. This shortens the lead time and will have your machine or vehicle up and running in no time!

### **Advantages:**

- An exchange engine available on stock to replace your old engine
- No unsuspected delays on delivery or repair
- Fixed prices on exchange engines and core charges
- 24h delivery in Europe!

***INDUSTRIAL MACHINES  
AUTOMOTIVE BUS & TRUCK  
MARINE & OFFSHORE APPLICATIONS***





## ***Reconditioned LONG-BLOCK or SHORT-BLOCK engines***

HAMOFA is also specialized in the assembly of “long-block” & “short-block” engines. This is a partly assembled engine without external parts. “Long-blocks” & “short-blocks” are built in compliance with the customer’s old engine serial number.

The long-block comes with oil and water pump and a complete gasket kit. The short-block comes without cylinder heads, lubrication pump and water pump.

### ***Advantages:***

- No need to buy external parts that are still re-usable from your old engine
- Easy to pack and transport
- Easy to import as it will be accepted as “parts” and not as a “complete diesel engine”



### ***LONG-BLOCK***



### ***SHORT-BLOCK***



## ***Used engines***

HAMOFA also sells used engines with 3 months warranty for industrial, marine and automotive applications!  
Over 800 used engines are available in our HAMOFA warehouses!

### ***Following items are checked prior to delivery:***

- crankshaft bearings
- connection rod bearings
- oil pressure
- water temperature
- video inspection of cylinder liners
- compression test per cylinder
- test run on test bench for power rating



## ***New engines***

HAMOFA stocks new engines of most common brands and sells them with 12 months warranty, unlimited in working hours or kilometers.  
All new engines can be compared to your old engine's serial number.









## ***New engine parts***

HAMOFA sells new engine parts for engines of most known brands.

<b>Caterpillar</b>	<b>Detroit</b>	<b>DAF</b>
<b>Mercedes</b>	<b>Volvo</b>	<b>Perkins</b>
<b>Cummins</b>	<b>Scania</b>	<b>Komatsu</b>
<b>MAN</b>	<b>Deutz</b>	<b>MTU</b>

HAMOFA delivers new parts worldwide, ranging from crankshafts, engine blocks, cylinder heads, pistons to bearings, gaskets and valves.

Customers can choose between original OEM or aftermarket parts, all with a guaranteed quality level.



## ***Used & reconditioned engine parts***

HAMOFA has a large stock of used and reconditioned parts, checked on functionality and condition:

<b>crankshafts</b>	<b>cylinder blocks</b>
<b>camshafts</b>	<b>oil pans</b>
<b>cylinder heads</b>	<b>fuel pumps</b>
<b>connection rods</b>	<b>coolers</b>











## ***Power packs***

HAMOFA delivers power-packs in accordance with your specifications.

HAMOFA builds the complete packs from drawing up to steel construction, including hydraulics, water pumps, electronics and more!



## ***Assembly and disassembly of the engine***

HAMOFA has a fully equipped workshop to dismantle and assemble the engine in your vehicle or machine.

Specific transports around Europe are possible to transport your machine or vehicle to our workshop.







**HAMOFA**  
INDUSTRIAL ENGINES



## ***Test facilities***

HAMOFA has two specific test facilities, one with a rating until 800HP and one with a rating until 2500HP.

HAMOFA can test engines under a specific load to check the compatibility with the specifications of the manufacturer.

During the test all necessary data is continuously checked including oil pressure, oil temperature and water temperature.

HAMOFA has access to the most recent computer systems to test engines either with traditional inline Bosch plunger pumps or with the newest electronic engine management systems (e.g. common rail, PLD, HEUI).

There is also the possibility to reprogram ECU's with the latest software updates.





## ***Worldwide transport***

Since 1995 HAMOFA serves customers in all continents in diverse sectors.

As a global company HAMOFA delivers its engines and parts worldwide.

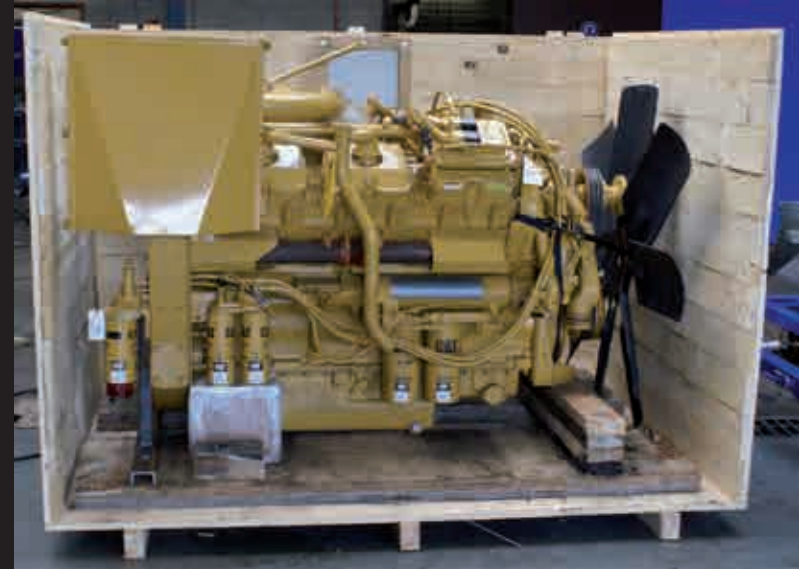
The most stringent safety conditions remain priority before and during transport.

This implies strict procedures, starting by mandatory use of a certified wooden box for intercontinental transports.

All export documents can be issued by the HAMOFA export department.

The export declaration can even be issued via HAMOFA's own customs depot.

HAMOFA has carefully selected its logistical partners through which it can offer you road, sea or air transport including insurance. Express deliveries within 24 hours in Europe and USA are also available on request!



## HAMOFA Belgium

The HAMOFA headquarters is strategically located in Belgium, situated at the border with the Netherlands and not far from Germany. This location is ideal for transport within Europe and the rest of the world.

HAMOFA Belgium has workshops for all your reconditioning needs. The Belgian facility includes approximately 10.000m<sup>2</sup>, including large warehouses.

Its extensive stock of engines and parts is your advantage!  
HAMOFA Belgium can meet your request fast and efficiently.



Bedrijfsstraat 4  
3930 Hamont (Belgium)  
T : +32 11 62 24 94  
F : +32 11 62 12 27  
E : info@hamofa.be

## HAMOFA USA

The HAMOFA USA facility is located in FORT-LAUDERDALE, the maritime heart of Florida. This location is strategic as well, due to its vicinity to Miami.

HAMOFA USA also has workshops for all your reconditioning needs. Its warehouse has an extensive stock of diesel engines and parts, ready for transport!



909 NW 5th Avenue.  
Fort Lauderdale, FL 33311 (USA)  
T : +1 954 463 4100  
F : +1 954 463 6924  
E : info@hamofa.com

# www.hamofa.com