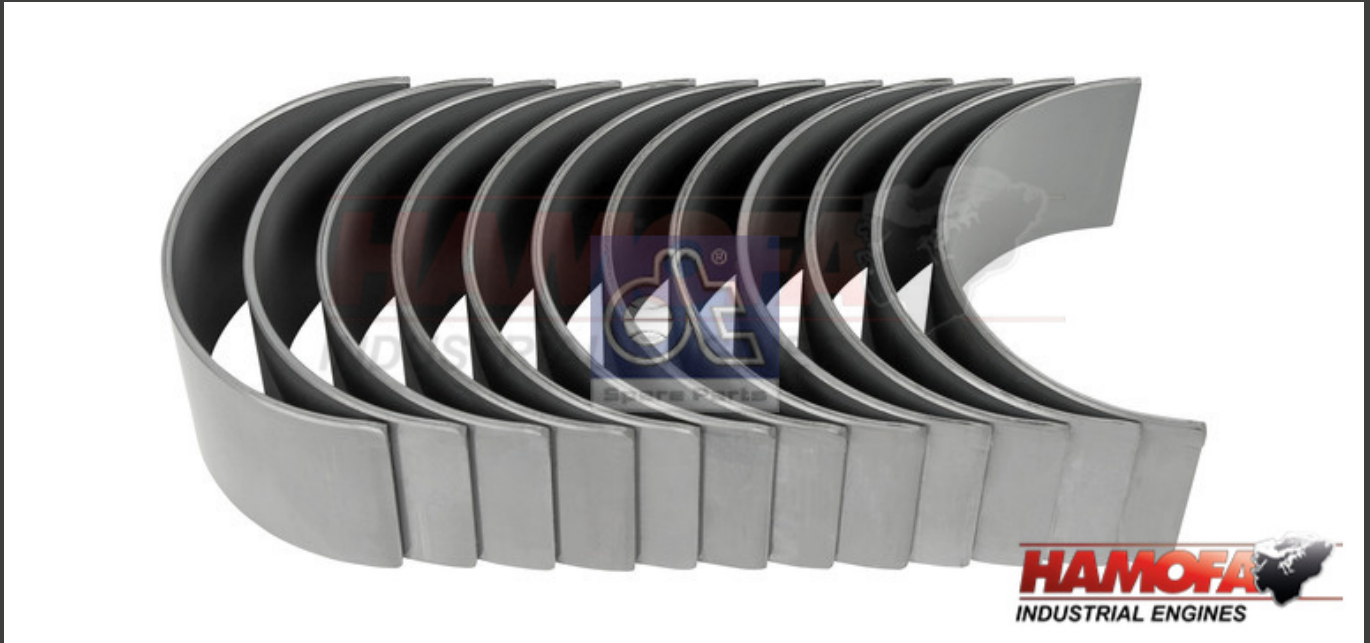


SCANIA CON ROD BEARING KIT 550495S NEW

Product Images



Additional Information

Brand	SCANIA						
Condition	ORIGINAL						
Application Suitable	Federal, Scania						
Applications suitable (detailed)	Vehicle brand	Model	Year(s)	Type	kW	HP	ccm
	Scania	DC 12.01	09.1998 -				
	Scania	DC 12.02	-				
	Scania	DC 12.03	-				
	Scania	DC 12.09	-				
	Scania	DSC 12.01	05.1996 -				

	Vehicle brand	Model	Year(s)	Type	kW	HP	ccm
	Scania	DSC 12.02	09.1995 -				
	Scania	DSC 12.03	-				
	Scania	DSC 12.05	09.1997 -				
	Scania	DSC 12.06	-				
	Scania	DT 12.02	01.2001 -				
	Scania	DT 12.08	-				
	Scania	SCANIA 4 - series 124 /G420	-	Truck Tractor	309	420	11700
	Scania	SCANIA 4 - series 124 C/360	-	Concrete Mixer	265	360	11700
	Scania	SCANIA 4 - series 124 C/360	-	Platform / Chassis	265	360	11700
	Scania	SCANIA 4 - series 124 C/360	09.1996 -	Dump Truck	265	360	11700
	Scania	SCANIA 4 - series 124 C/360	09.1996 -	Platform / Chassis	265	360	11700
	Scania	SCANIA 4 - series 124 C/360	09.1996 -	Truck Tractor	265	360	11700
	Scania	SCANIA 4 - series 124 C/400	09.1996 -	Dump Truck	294	400	11700
	Scania	SCANIA 4 - series 124 C/400	09.1996 -	Platform / Chassis	294	400	11700
	Scania	SCANIA 4 - series 124 C/400	09.1996 -	Truck Tractor	294	400	11700
	Scania	SCANIA 4 - series 124 C/420	-	Dump Truck	309	420	11700
	Scania	SCANIA 4 - series 124 C/420	-	Platform / Chassis	309	420	11700
	Scania	SCANIA 4 - series 124 C/420	-	Truck Tractor	309	420	11700

	Vehicle brand	Model	Year(s)	Type	kW	HP	ccm
	Scania	SCANIA 4 - series 124 C/470	-	Platform / Chassis	345	469	11716
	Scania	SCANIA 4 - series 124 C/470	-	Truck Tractor	345	469	11716
	Scania	SCANIA 4 - series 124 G/360	05.1996 -	Platform / Chassis	265	360	11700
	Scania	SCANIA 4 - series 124 G/360	05.1996 -	Truck Tractor	265	360	11700
	Scania	SCANIA 4 - series 124 G/400	05.1996 -	Platform / Chassis	294	400	11700
	Scania	SCANIA 4 - series 124 G/400	05.1996 -	Truck Tractor	294	400	11700
	Scania	SCANIA 4 - series 124 G/420	-	Platform / Chassis	309	420	11700
	Scania	SCANIA 4 - series 124 G/420	-	Truck Tractor	309	420	11700
	Scania	SCANIA 4 - series 124 G/470	-	Platform / Chassis	345	469	11716
	Scania	SCANIA 4 - series 124 L/360	09.1996 -	Platform / Chassis	265	360	11700
	Scania	SCANIA 4 - series 124 L/360	09.1996 -	Truck Tractor	265	360	11700
	Scania	SCANIA 4 - series 124 L/400	09.1996 -	Platform / Chassis	294	400	11700
	Scania	SCANIA 4 - series 124 L/400	09.1996 -	Truck Tractor	294	400	11700
	Scania	SCANIA 4 - series 124 L/420	-	Platform / Chassis	309	420	11700
	Scania	SCANIA 4 - series 124 L/420	-	Truck Tractor	308	419	11700

	Vehicle brand	Model	Year(s)	Type	kW	HP	ccm
	Scania	SCANIA 4 - series 124 L/420	-	Truck Tractor	309	420	11700
	Scania	SCANIA 4 - series 124 L/420	09.1997 -	Platform / Chassis	309	420	11700
	Scania	SCANIA 4 - series 124 L/420	09.1997 -	Truck Tractor	308	420	11716
	Scania	SCANIA 4 - series 124 L/420	09.1997 -	Truck Tractor	309	420	11700
	Scania	SCANIA 4 - series 124 L/440	01.2001 -	Platform / Chassis	324	440	11716
	Scania	SCANIA 4 - series 124 L/440	01.2001 -	Truck Tractor	324	440	11716
	Scania	SCANIA 4 - series 124 L/470	-	Truck Tractor	345	469	11716
	Scania	SCANIA 4 - series 124 L/470	01.2001 -	Platform / Chassis	345	470	11716
	Scania	SCANIA 4 - series 124 L/470	01.2001 -	Truck Tractor	345	470	11716
	Scania	SCANIA 4 - series T 124 C/360	09.1995 -	Dump Truck	265	360	11700
	Scania	SCANIA 4 - series T 124 C/360	09.1995 -	Platform / Chassis	265	360	11700
	Scania	SCANIA 4 - series T 124 C/360	09.1995 -	Truck Tractor	265	360	11700
	Scania	SCANIA 4 - series T 124 C/400	05.1996 -	Dump Truck	294	400	11700
	Scania	SCANIA 4 - series T 124 C/400	05.1996 -	Platform / Chassis	294	400	11700
	Scania	SCANIA 4 - series T 124 C/400	05.1996 -	Truck Tractor	294	400	11700

	Vehicle brand	Model	Year(s)	Type	kW	HP	ccm
	Scania	SCANIA 4 - series T 124 C/420	-	Truck Tractor	309	420	11700
	Scania	SCANIA 4 - series T 124 C/420	05.1996 -	Dump Truck	309	420	11700
	Scania	SCANIA 4 - series T 124 C/420	05.1996 -	Platform / Chassis	309	420	11700
	Scania	SCANIA 4 - series T 124 C/420	05.1996 -	Truck Tractor	309	420	11700
	Scania	SCANIA 4 - series T 124 C/420	09.1997 -	Truck Tractor	309	420	11700
	Scania	SCANIA 4 - series T 124 G/360	03.1997 -	Platform / Chassis	265	360	11700
	Scania	SCANIA 4 - series T 124 G/360	03.1997 -	Truck Tractor	265	360	11700
	Scania	SCANIA 4 - series T 124 G/400	03.1997 -	Platform / Chassis	294	400	11700
	Scania	SCANIA 4 - series T 124 G/400	03.1997 -	Truck Tractor	294	400	11700
	Scania	SCANIA 4 - series T 124 G/420	-	Truck Tractor	309	420	11700
	Scania	SCANIA 4 - series T 124 G/420	05.1996 -	Platform / Chassis	309	420	11700
	Scania	SCANIA 4 - series T 124 G/420	09.1997 -	Platform / Chassis	309	420	11700
	Scania	SCANIA 4 - series T 124 G/420	09.1997 -	Truck Tractor	309	420	11700
	Scania	SCANIA 4 - series T 124 L/360	02.1997 -	Truck Tractor	265	360	11700
	Scania	SCANIA 4 - series T 124 L/360	05.1995 -	Truck Tractor	265	360	11700

Vehicle brand	Model	Year(s)	Type	kW	HP	ccm
Scania	SCANIA 4 - series T 124 L/360	09.1995 -	Truck Tractor	265	360	11700
Scania	SCANIA 4 - series T 124 L/400	02.1997 -	Truck Tractor	294	400	11700
Scania	SCANIA 4 - series T 124 L/400	05.1996 -	Truck Tractor	294	400	11700
Scania	SCANIA 4 - series T 124 L/420	-	Truck Tractor	309	420	11700
Scania	SCANIA 4 - series T 124 L/420	05.1996 -	Truck Tractor	309	420	11700
Scania	SCANIA 4 - series T 124 L/420	09.1997 -	Truck Tractor	309	420	11700
Scania	SCANIA 4 - series T 124 L/470	-	Truck Tractor	345	469	11716
Scania	SCANIA 4 - series T 124 L/470	01.2001 -	Truck Tractor	345	470	11716

Oversize [mm]

OS

0.25

Vehicle brand

Model, Engine, Gearbox, Axle, Cabin

Further Trucks

Federal

Scania 4-Series

DC 9 19/20/21, DC 11, DSC-DC 12

Scania Bus 4-/F-/K-/N-Series

4-Series DC 9 19/20/21, DC 11, DC-DSC 12 F-/K-/N-Series DC 9, DC 11, DC-DT 12

Scania P-/G-/R-/T-Series

DC 9, DC 11, DC-DT 12

Replaces Ref. No.

Federal 64685CP025

Scania 1443857

Replaces Ref. No.

Scania 1786249

Scania 550495

Scania 550495 S