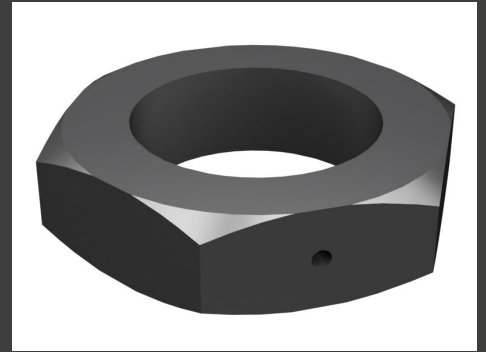
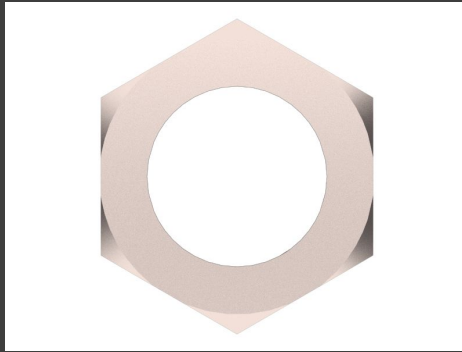
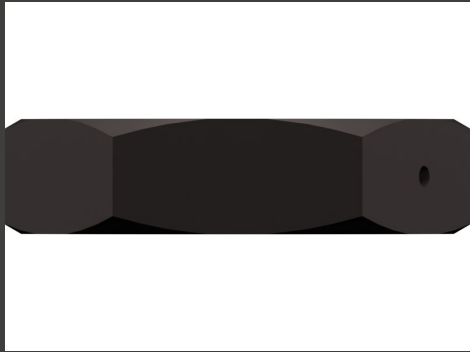


CATERPILLAR NUT LOCK 1043947 NEW

Product Images



Omschrijving

Description: fastener parts are designed for specific applications based on size, strength, clamp load, and past performance. This is information other manufacturers do not have. They are selected to last until rebuild or the life of the machine. While it may seem as though non-Cat hardware and fasteners are suitable for your machine, no other company knows your equipment like we do. These nuts provide a prevailing torque so nut will not back off. Do not exceed 120 C. Attributes: •Cat Fasteners are manufactured to precise specifications and are built for durability, reliability, productivity •Strength & Quality – Fasteners meet or exceed ISO, ASTM, ASME & SAE requirements. •Cat bolts, nuts, and washers are designed to work together as a system for maximum clamping force. •Coatings that meet special requirements for different applications (RoHS compliant). Applications: Cat bolts and the matching hardened washers and nuts form a performance based system which produces consistently high clamp loads. You can trust Cat Fasteners to help you build it, maintain it, or fix it - for most machine and workshop applications throughout the world.

Additional Information

Merk	CATERPILLAR
Voorwaarde	ORIGINEEL