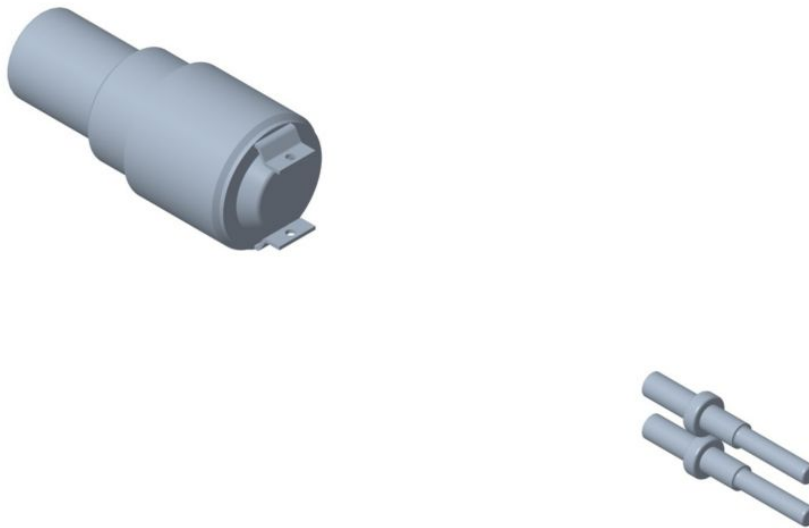


## CATERPILLAR SWITCH A 8Y7237 NEW

### Product Images



### Omschrijving

#### Description:

Cat push button switches are mounted on the joystick or control panel which are simple switches to push-to-make or push-to-break the circuit for a period. Cat components make certain that your equipment is operating at an optimal level.

#### Attributes:

- Pushbutton switch with pigtail connector
- Momentary open, normally closed

- Voltage: 28 VDC
- Single pole single throw (SPST)
- Thread Size: 1/2-32
- Contact Size: 16
- Sealed against dust and moisture
- Rugged design for long service life
- High precision for consistent performance
- Easy and fast mounting
- Designed to work in unison with the rest of your Cat components to ensure maximum potential of your equipment

**Application:**

Used in operator control handles on Cat machines. Consult your owner's manual or contact your local Cat Dealer for more information. Cat components can operate in heavy-duty applications such as severe vibration, shock, extreme operating temperature ranges, thermal cycle, thermal shock, humidity, corrosion and excessive dust.

## Additional Information

Merk	CATERPILLAR	
Voorwaarde	ORIGINEEL	
Toepassingen geschikt (gedetailleerd)	Name	Models
	BACKHOE LOADER	416C 426C 428C 436C 438C 446 446B