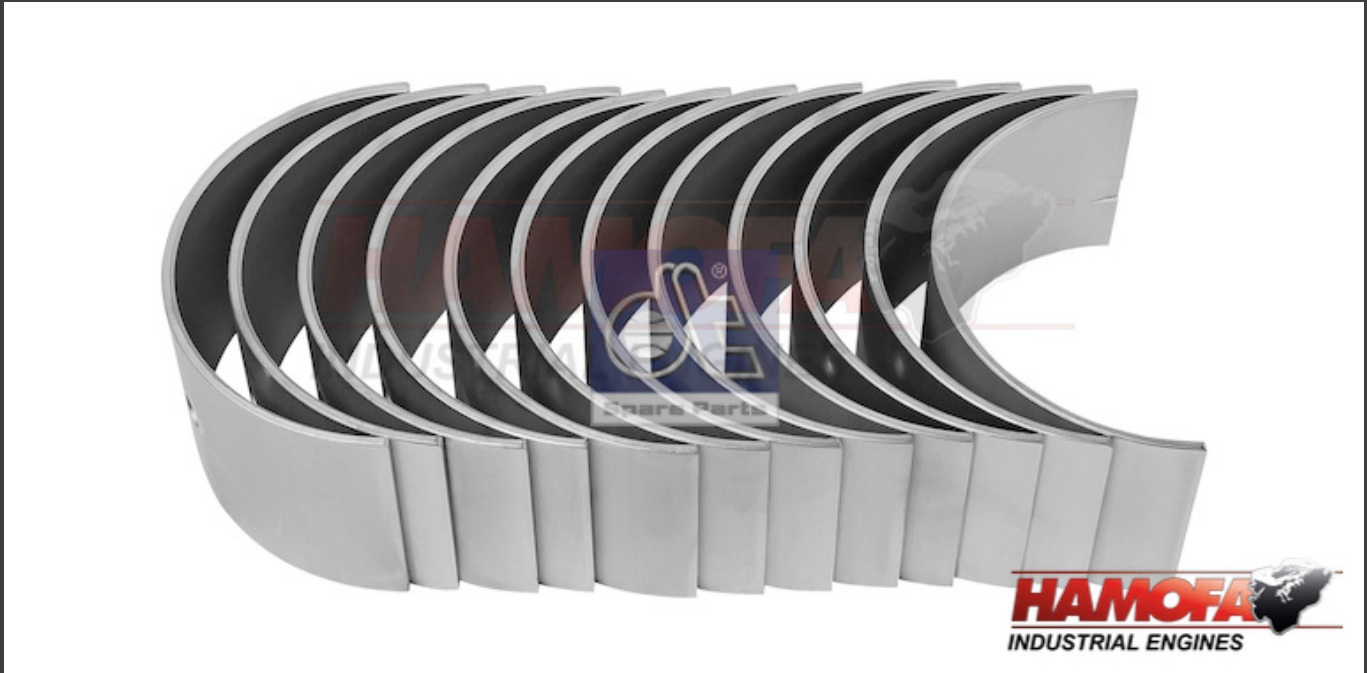


## VOLVO CON ROD BEARING KIT 270124S NEW

### Product Images



### Additional Information

Merk	VOLVO						
Motor Type	D10B, DH10A, TD100G, TD1030VE, TD103KCE, THD102KB, TWD1031VE						
Voorwaarde	ORIGINEEL						
Vervangt	270124 S						
Toepassing Geschikt:	Volvo						

Toepassingen geschikt (gedetailleerd)	Vehicle brand	Model	Year(s)	Type	kW	HP	ccm
	Volvo	D 100 A	-				
	Volvo	D 100 B	-				

Vehicle brand	Model	Year(s)	Type	kW	HP	ccm
Volvo	TD 100 A	-				
Volvo	TD 100 B	-				
Volvo	TD 100 BG	-				
Volvo	TD 100 G	-				
Volvo	TD 100 GA	-				
Volvo	TD 101 FC	-				
Volvo	TD 101 FD	01.1987 - 01.1989				
Volvo	TD 101 G	10.1983 - 05.1988				
Volvo	TD 101 GB	-				
Volvo	TD 101 GE	-				
Volvo	TD 102 F	-				
Volvo	TD 102 FD	-				
Volvo	TD 102 FDQ	09.1988 - 12.1995				
Volvo	TD 102 FF	-				
Volvo	TD 102 FH	-				
Volvo	TD 102 FL	12.1987 - 12.1994				
Volvo	TD 102 FM	-				
Volvo	TD 103 E	-				
Volvo	TD 103 ES	01.1991 - 12.1994				
Volvo	TD 103 KB	-				
Volvo	TD 103 KF	-				
Volvo	THD 100 A	-				
Volvo	THD 100 D	06.1978 - 01.1984				
Volvo	THD 100 DB	-				
Volvo	THD 100 DC	-				

Vehicle brand	Model	Year(s)	Type	kW	HP	ccm
Volvo	THD 100 DD	-				
Volvo	THD 100 E	-				
Volvo	THD 100 EB	-				
Volvo	THD 100 EC	-				
Volvo	THD 100 ED	-				
Volvo	THD 101 KB	05.1988 -				
Volvo	THD 101 KC	01.1989 -				
Volvo	THD 101 KE	-				
Volvo	THD 102 KA	-				
Volvo	THD 102 KB	-				
Volvo	THD 102 KD	-				
Volvo	THD 102 KE	-				
Volvo	THD 102 KF	-				
Volvo	THD 103 KD	-				
Volvo	VOLVO B 10 B10M	-	Bus	178	242	9600
Volvo	VOLVO B 10 B10M	-	Bus	203	276	9600
Volvo	VOLVO F 10 F 10/260	01.1983 - 06.1985	Platform / Chassis	192	261	9600
Volvo	VOLVO F 10 F 10/260	02.1982 - 06.1985	Dump Truck	192	261	9600
Volvo	VOLVO F 10 F 10/260	02.1982 - 06.1985	Platform / Chassis	192	261	9600
Volvo	VOLVO F 10 F 10/260	02.1982 - 06.1985	Truck Tractor	192	261	9600
Volvo	VOLVO F 10 F 10/280	08.1977 - 02.1982	Dump Truck	206	280	9600

Vehicle brand	Model	Year(s)	Type	kW	HP	ccm
Volvo	VOLVO F 10 F 10/280	08.1977 - 02.1982	Platform / Chassis	206	280	9600
Volvo	VOLVO F 10 F 10/280	08.1977 - 02.1982	Truck Tractor	206	280	9600
Volvo	VOLVO F 10 F 10/320	10.1987 - 12.1990	Dump Truck	228	310	9600
Volvo	VOLVO F 10 F 10/320	10.1987 - 12.1990	Platform / Chassis	228	310	9600
Volvo	VOLVO F 10 F 10/320	10.1987 - 12.1990	Truck Tractor	228	310	9600
Volvo	VOLVO F 10 F 10/320	12.1990 - 12.1994	Dump Truck	228	310	9600
Volvo	VOLVO F 10 F 10/320	12.1990 - 12.1994	Platform / Chassis	228	310	9600
Volvo	VOLVO F 10 F 10/320	12.1990 - 12.1994	Truck Tractor	228	310	9600
Volvo	VOLVO F 80 F 88/260	08.1965 - 06.1977	Platform / Chassis	190	258	9600
Volvo	VOLVO FL 10 FL 10/280	09.1985 - 12.1990	Dump Truck	202	275	9600
Volvo	VOLVO FL 10 FL 10/280	09.1985 - 12.1990	Platform / Chassis	202	275	9600
Volvo	VOLVO FL 10 FL 10/280	09.1985 - 12.1990	Truck Tractor	202	275	9600
Volvo	VOLVO N 10 N 10/270	01.1973 - 12.1989	Dump Truck	202	270	9600
Volvo	VOLVO N 10 N 10/270	01.1973 - 12.1989	Platform / Chassis	202	270	9600
Volvo	VOLVO N 10 N 10/270	01.1973 - 12.1989	Truck Tractor	202	270	9600
Volvo	VOLVO N 10 N 10/300	01.1973 - 12.1989	Dump Truck	220	299	9600
Volvo	VOLVO N 10 N 10/300	01.1973 - 12.1989	Platform / Chassis	220	299	9600

Vehicle brand	Model	Year(s)	Type	kW	HP	ccm
Volvo	VOLVO N 10 N 10/300	01.1973 - 12.1989	Truck Tractor	220	299	9600

Parameter

STD

Vehicle brand

Model, Engine, Gearbox, Axle, Cabin

Volvo Bus B 10/12 (TD/THD engine)

THD 100 D/E, THD 101 G, THD 102 K, THD 103 K, THD 104 K, TD 102 KF, D/DH 10 A, GH 10 A/B/C

Volvo F/FL/N/NL 10/12/16

TD 100, TD 101, TD 102, TD 103, D 10 A

Volvo FH/FM/FMX/NH 9/10/11/12/13/16

D 10 B

**ReplacesRef. No.**

Vervangt ref. Nee.

Volvo 270124 S