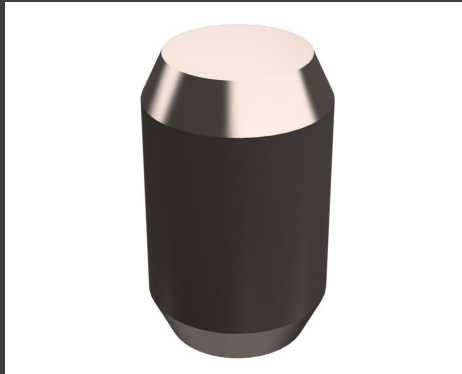
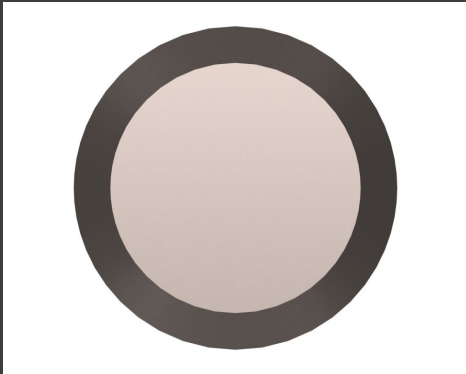


## CATERPILLAR DOWEL 8S6814 NEW

### Product Images



### Описание

Description: Dowel Pin is a solid headless straight pins with a closely controlled diameter used to transmit load or to position adjacent parts by being press fitted in one or both parts. Fastener & Hardware parts are designed for specific applications based on size, strength, clamp load, and past performance. This is information other manufacturers do not have. They are selected to last until rebuild or the life of the machine. While it may seem as though non-Cat hardware and fasteners are suitable for your machine, no other company knows your equipment like we do. Attributes: • Cat fasteners & hardware are manufactured to precise specifications and are built for durability, reliability, productivity • Strength & Quality – Parts meet or exceed ISO, ASTM, ASME & SAE requirements • Coatings that meet special requirements for different applications (RoHS compliant) Applications: • You can trust Cat Fasteners & Hardware to help you build it, maintain it, or fix it - for most machine and workshop applications throughout the world

## Additional Information

Бренд

CATERPILLAR

Состояние

ОРИГИНАЛ