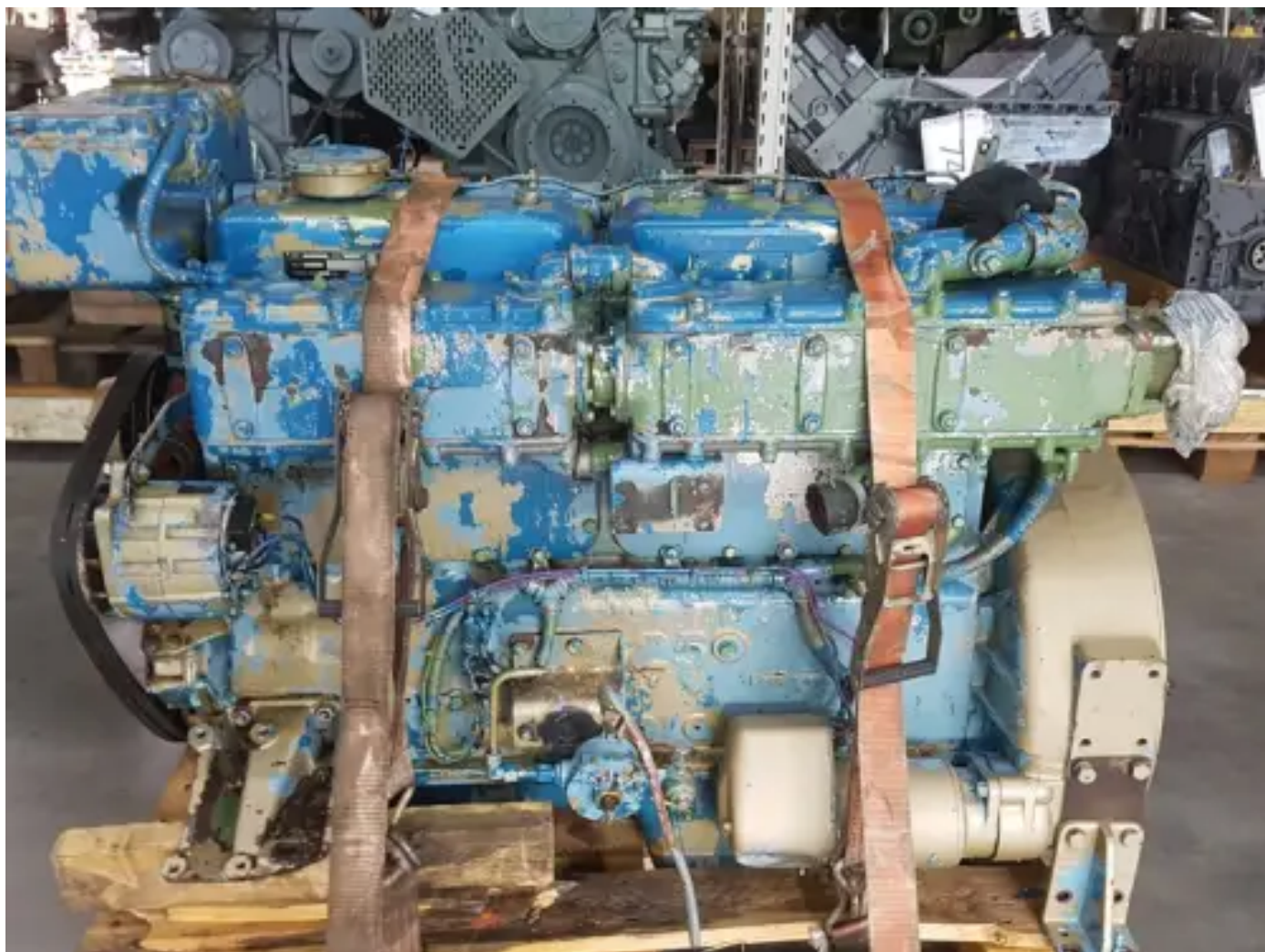


## DAF DH 825 MG USED



[Contact us](#)

### Specifications

Project number: PRJN2025100091

Condition: Used

Brand: daf

Motor serial number: D-98449

Type: Diesel Engines

Kind of product: Original

Engine Condition	used
Bore	118 mm
ECU Present	no
Aspiration type	natuurlijk aangezogen
Engine capacity	8270 cc
Engine color	blue
Engine cooling type	external exchanger (eg. keel cooled)
Exhaust System	watercooled
Injection Type	mechanical fuelpump
Qty Cylinders	6 qty
Starter Voltage	24 volt
Stroke	126 mm
Total Height	120 cm
Length	130 cm
Width	85 cm
Turbo type	none mounted
Weight (Specific)	1200 kg
Working Hours	5580 hour(s)