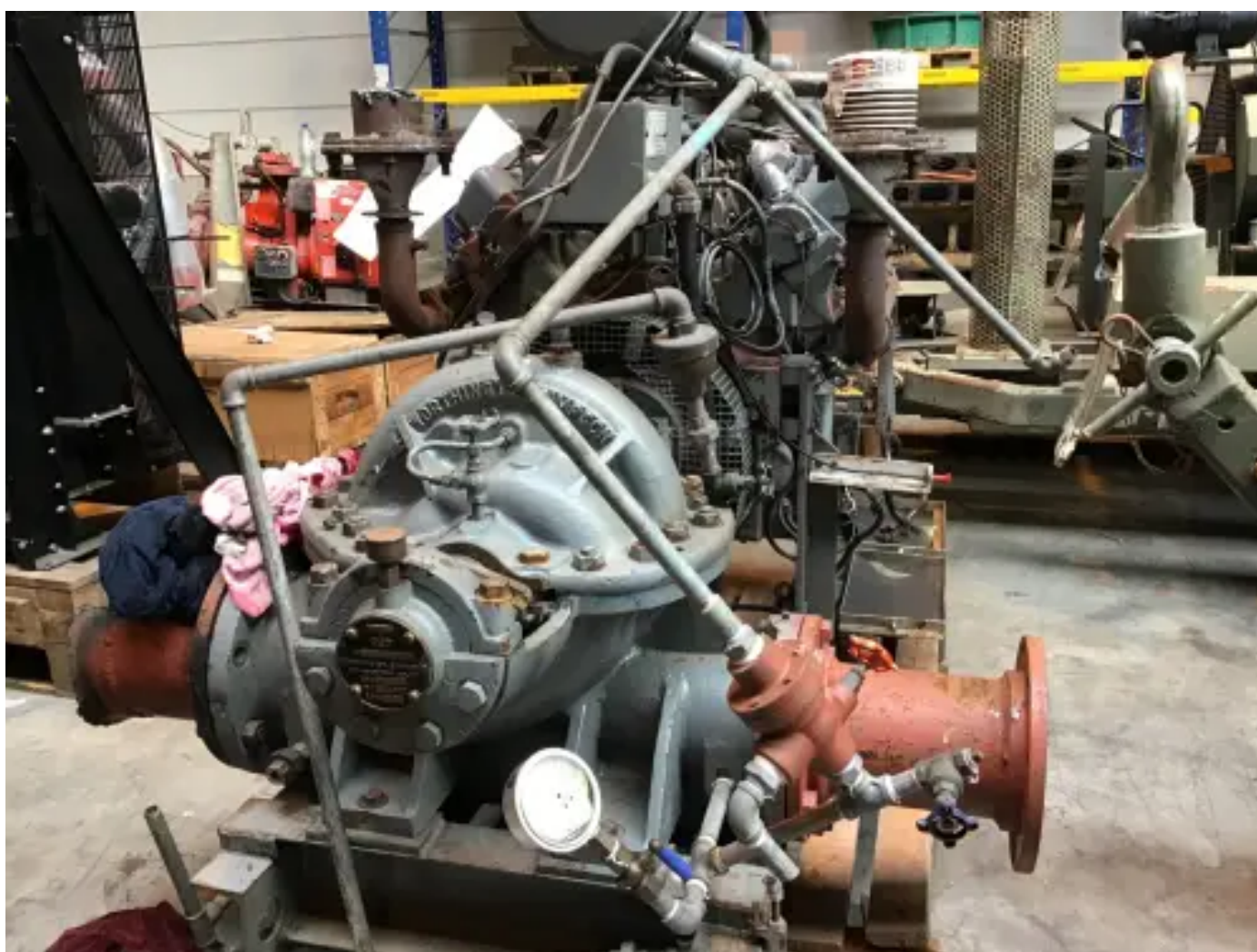


# FORD 2802 E V8 PUMPSET 550M3/H USED



[Contact us](#)

## Specifications

Condition:	Used
Brand:	ford
Motor serial number:	510UD5526
Type:	Pumps
Kind of product:	Original

ECU Present	no
Engine color	grey
Engine cooling type	radiator cooled (std)
Exhaust System	dry
Injection Type	mechanical fuelpump
Total Height	170 mm
Turbo type	none mounted
Working Hours	631 hour(s)